

Cardiac Conduction System

Courtesy: Dr. Dylan Miller

Sinoatrial Node

Anterior View of Heart

FIGURE 1a

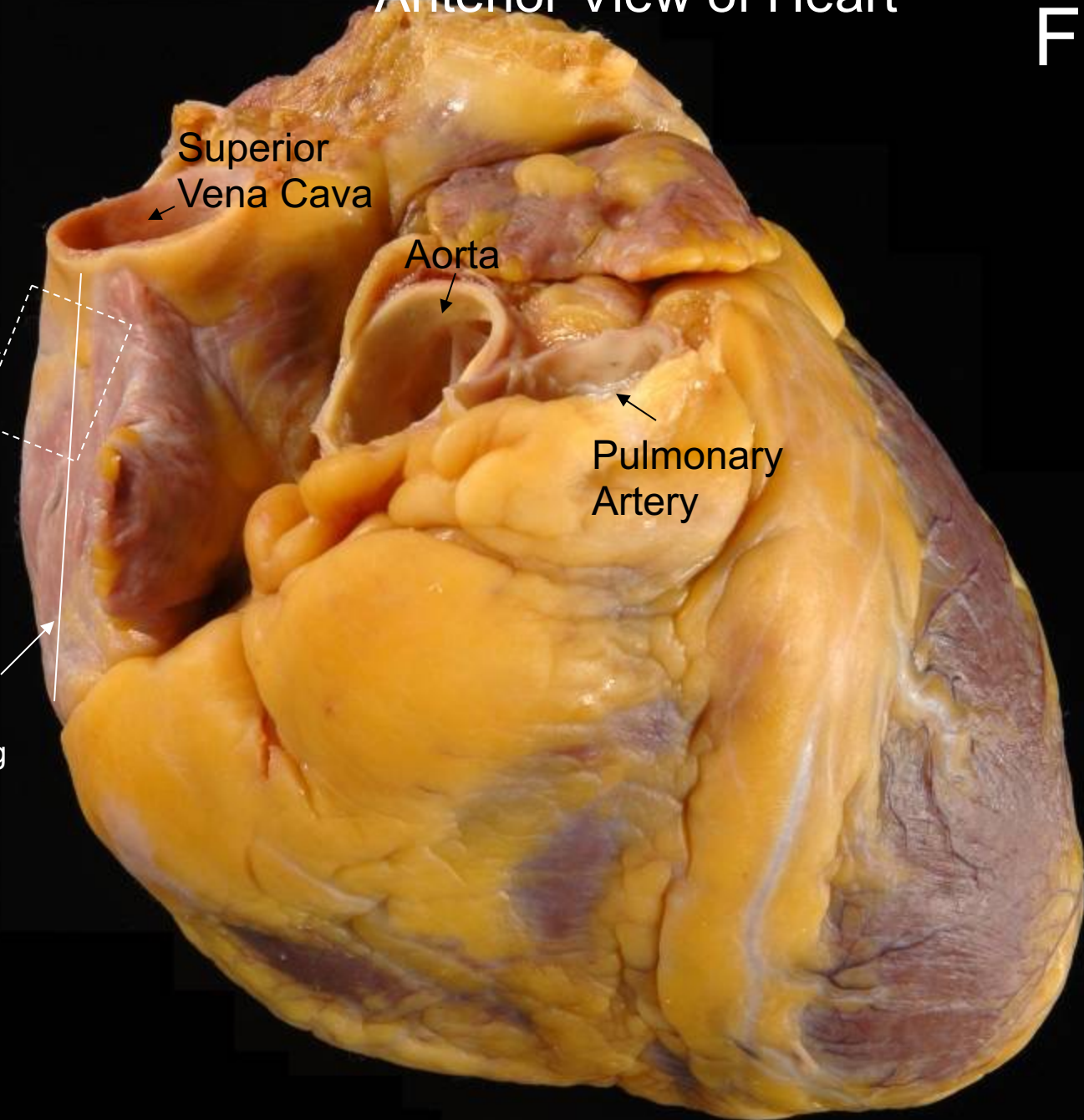
Remove
this block
of tissue
for SA
node

Superior
Vena Cava

Aorta

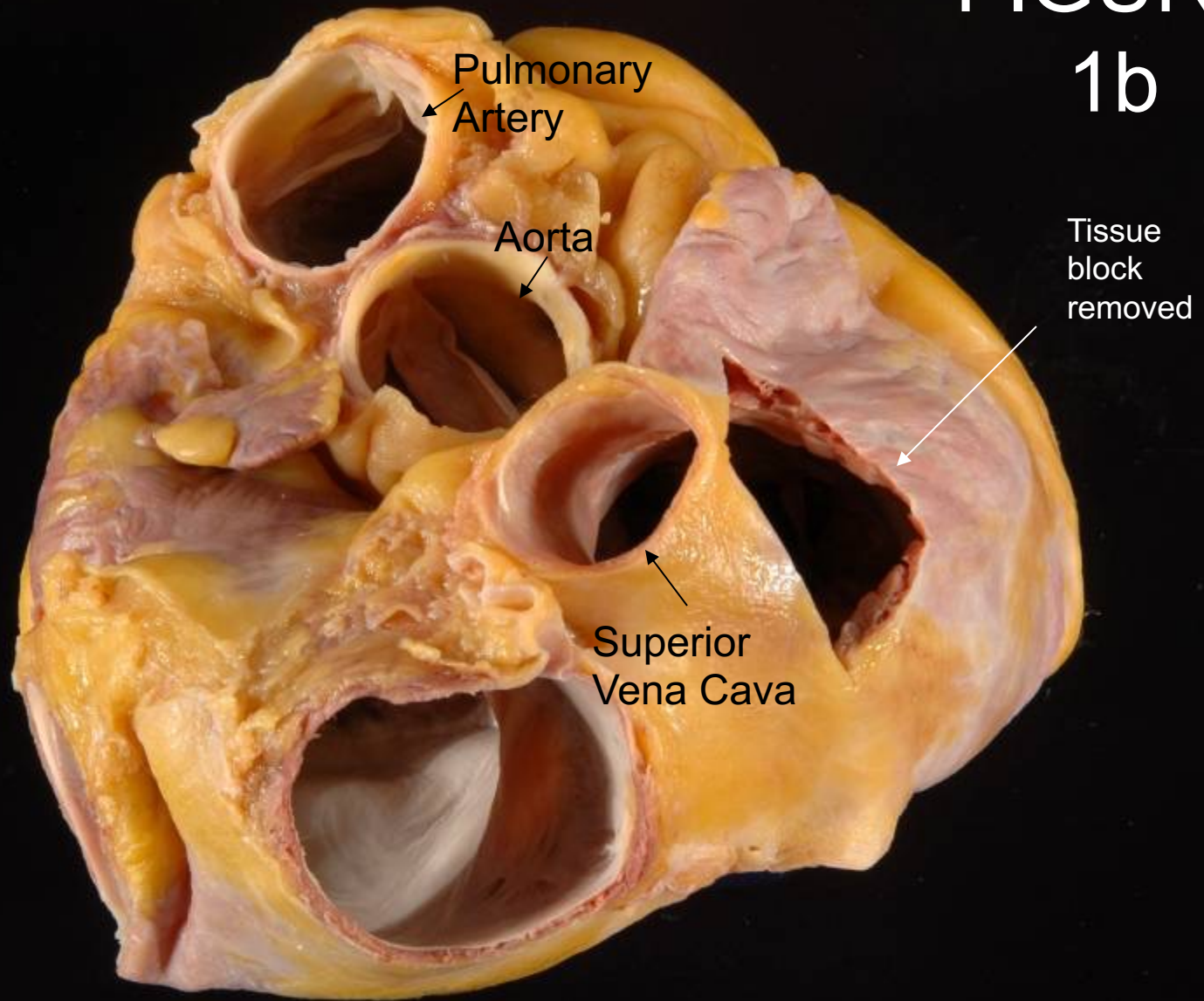
Pulmonary
Artery

Line
connecting
IVC and
SVC



Superior View of Heart

FIGURE 1b



Tissue
block
removed

Opened Right Atrium and Ventricle (from posterior view)

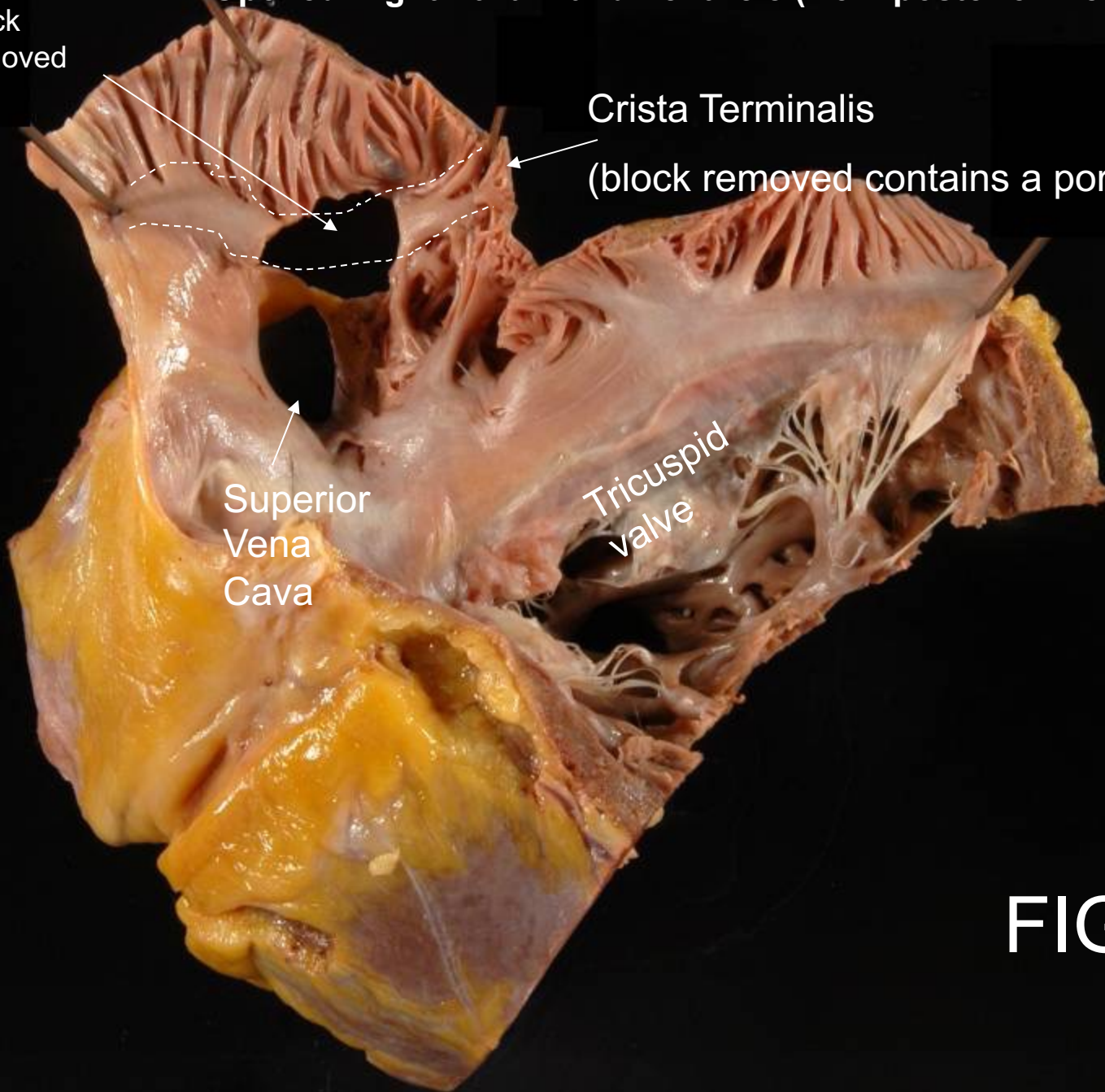
Crista Terminalis

(block removed contains a portion of this)

Superior
Vena
Cava

Tricuspid
valve

FIGURE
2a

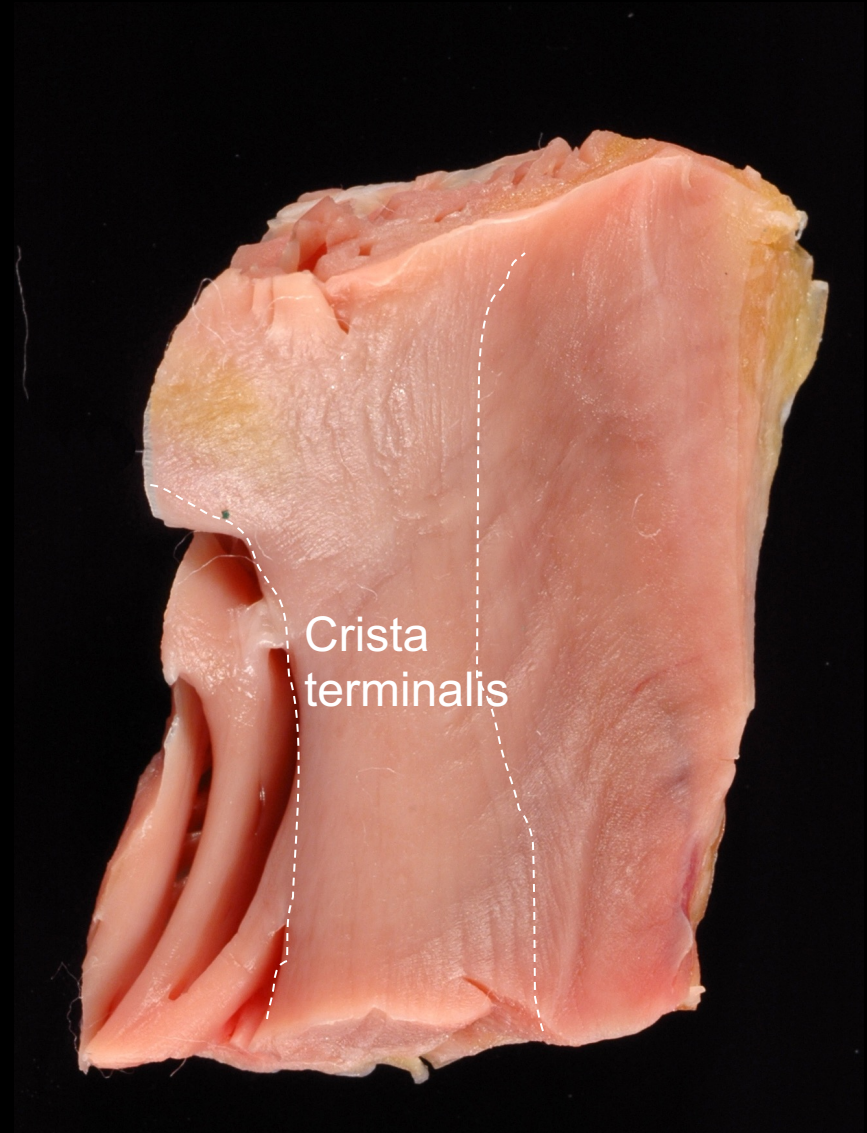


Epicardial view of block



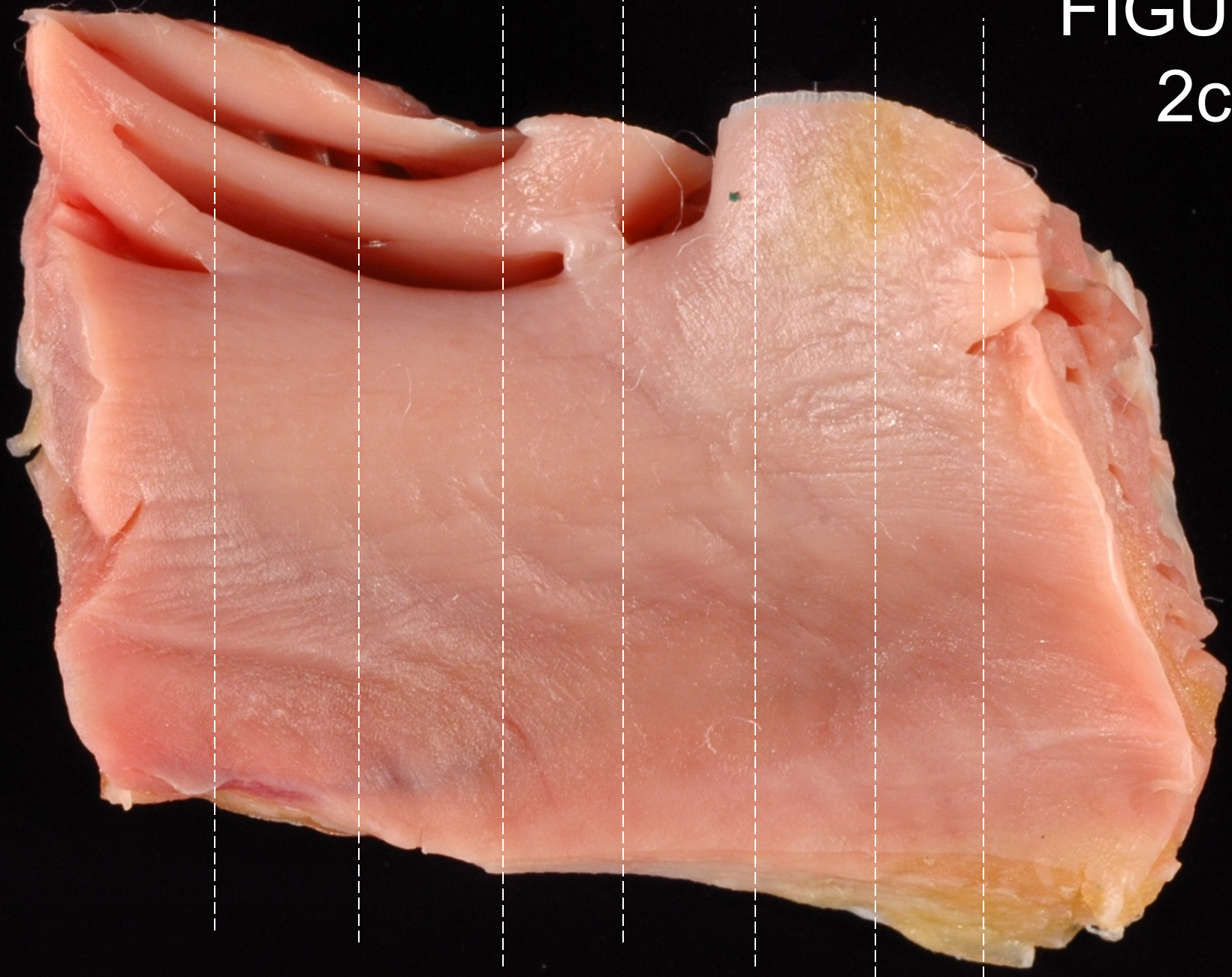
FIGURE 2b
- optional

Endocardial view of block



Sections cut like this

FIGURE
2c



Resulting in pieces that look like this

FIGURE 3

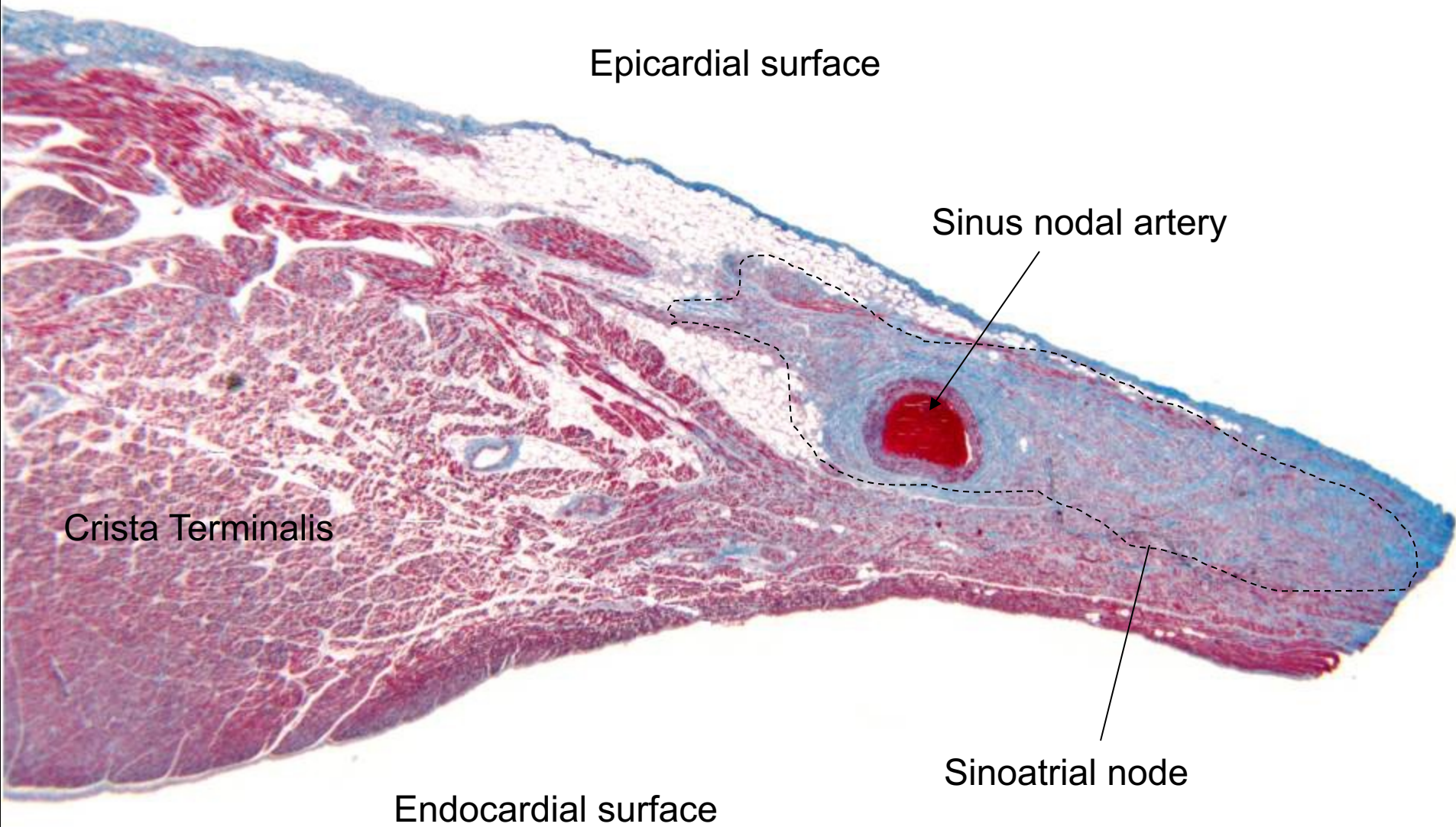


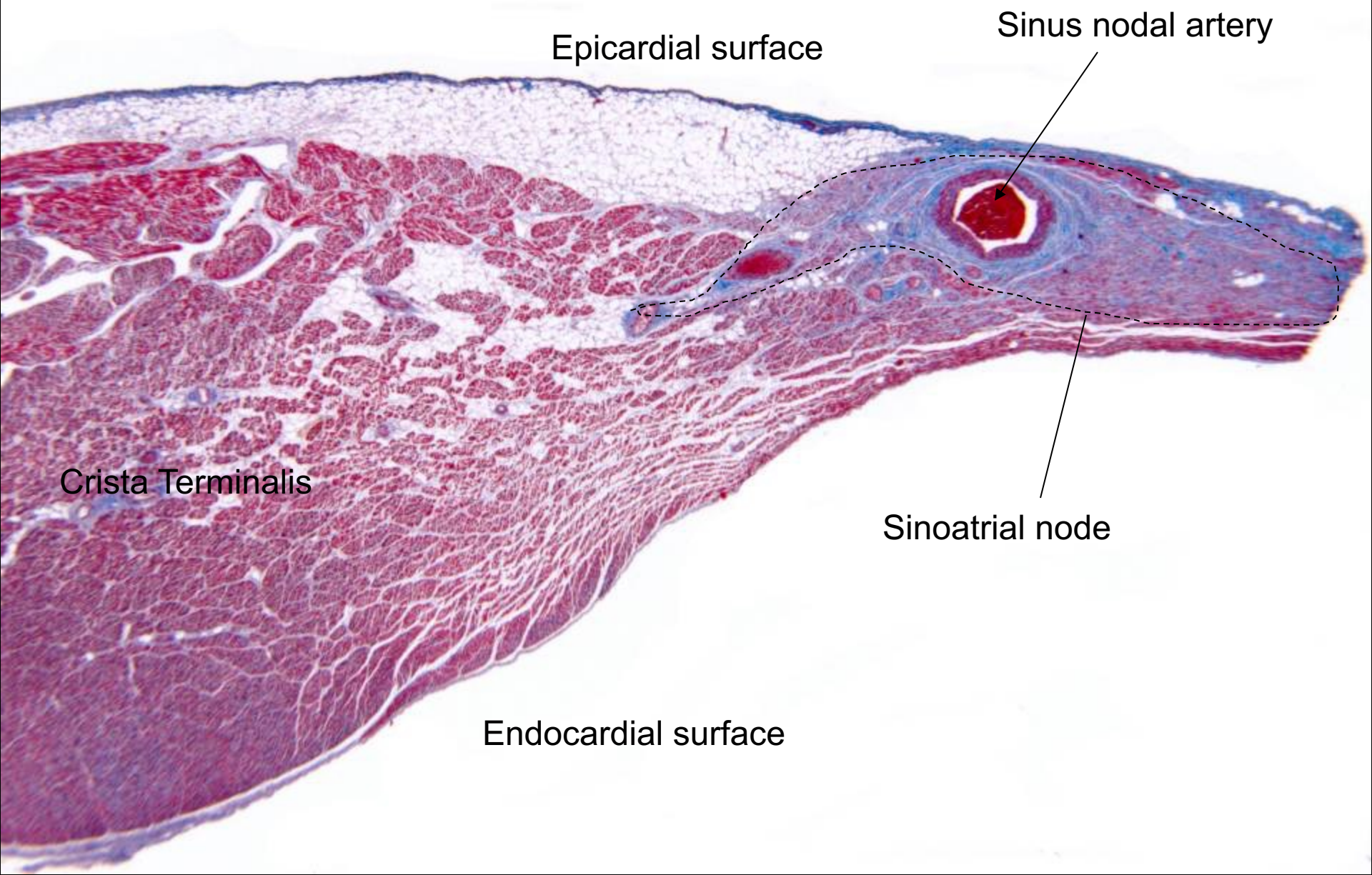
Sinus nodal artery

Crista terminalis

This piece is
shown under the
microscope in
the next slide

FIGURE 4





Epicardial surface

Sinus nodal artery

Crista Terminalis

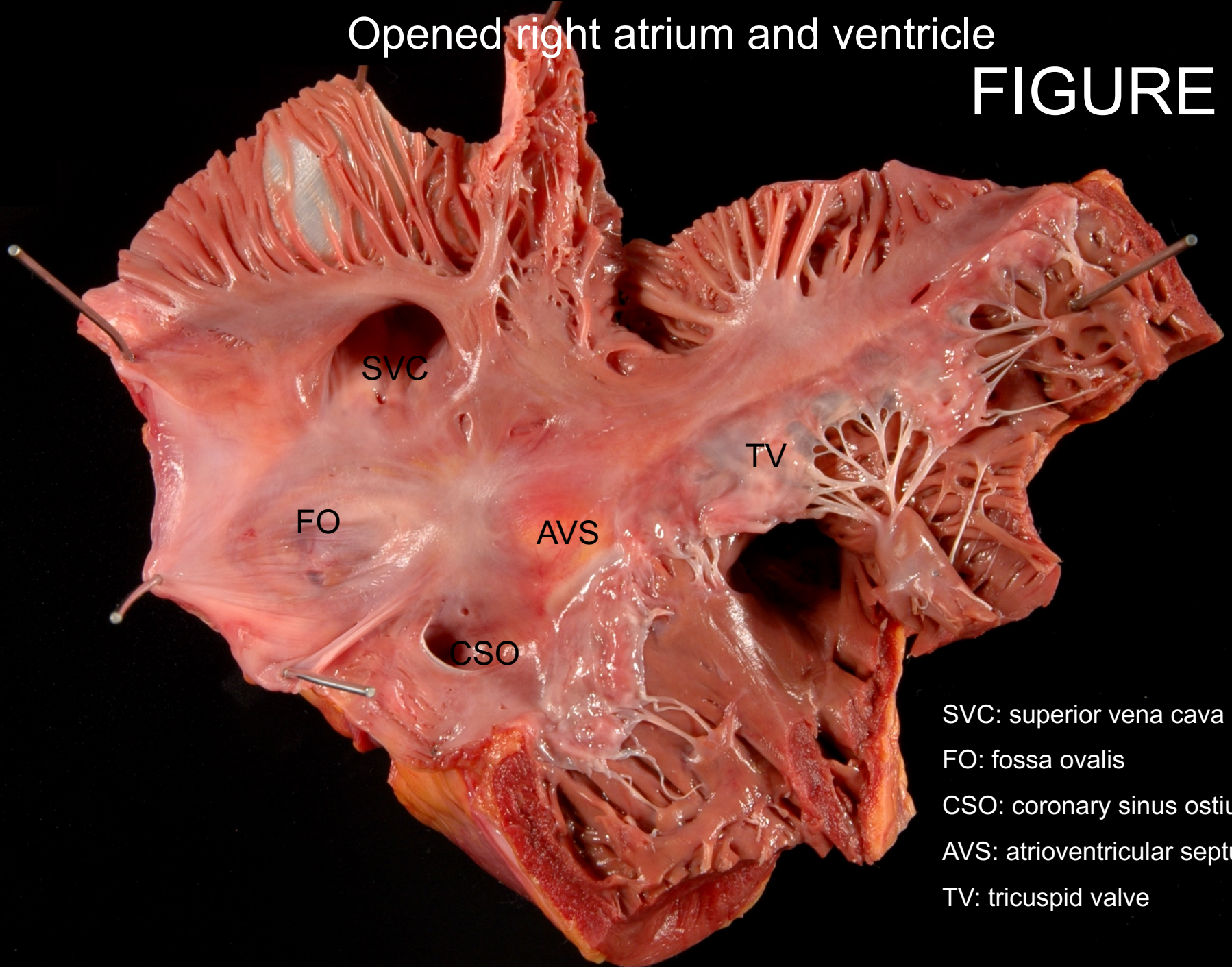
Sinoatrial node

Endocardial surface

Atrioventricular Node

Opened right atrium and ventricle

FIGURE 5



SVC

FO

CSO

AVS

TV

SVC: superior vena cava

FO: fossa ovalis

CSO: coronary sinus ostium

AVS: atrioventricular septum

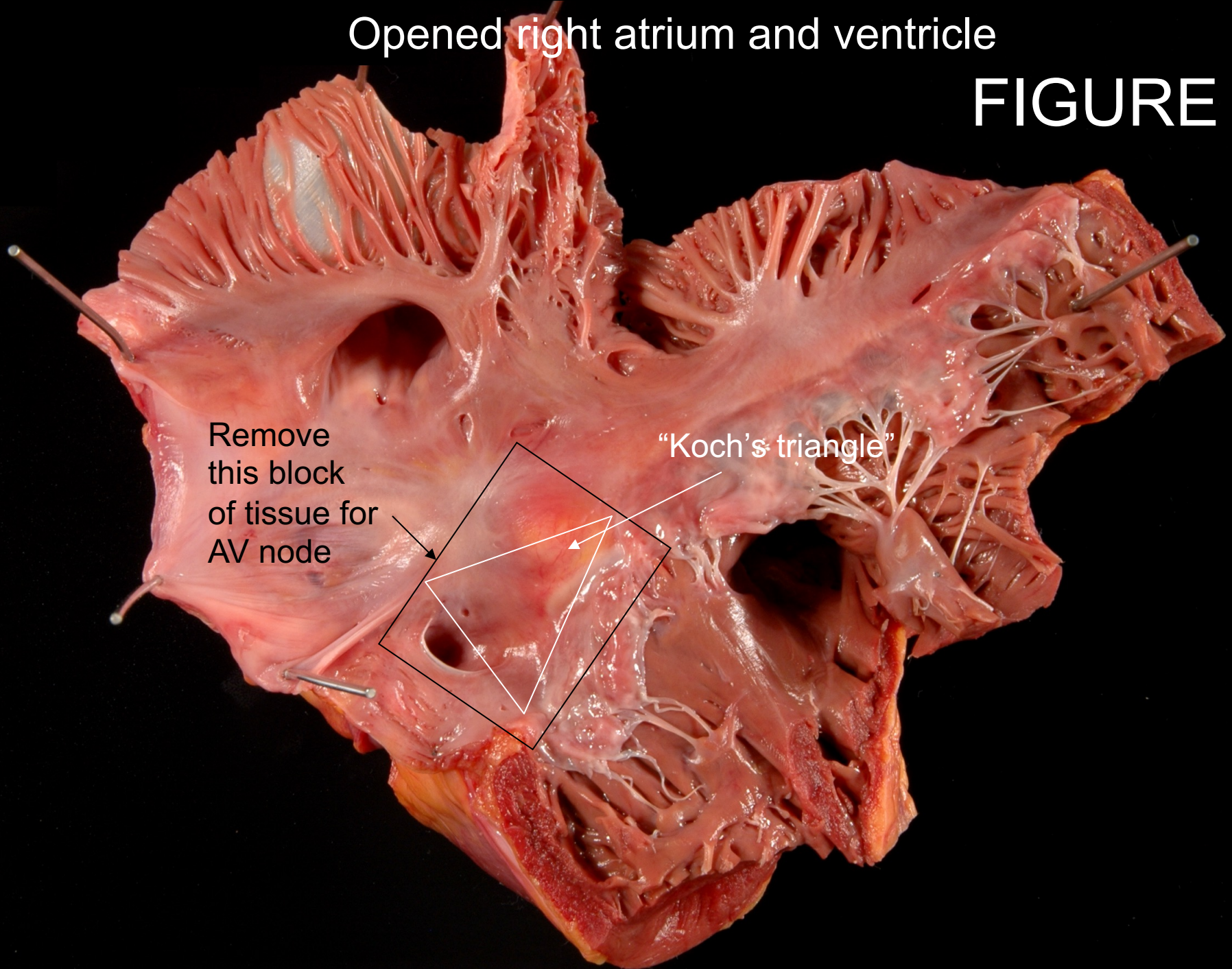
TV: tricuspid valve

Opened right atrium and ventricle

FIGURE 5

Remove
this block
of tissue for
AV node

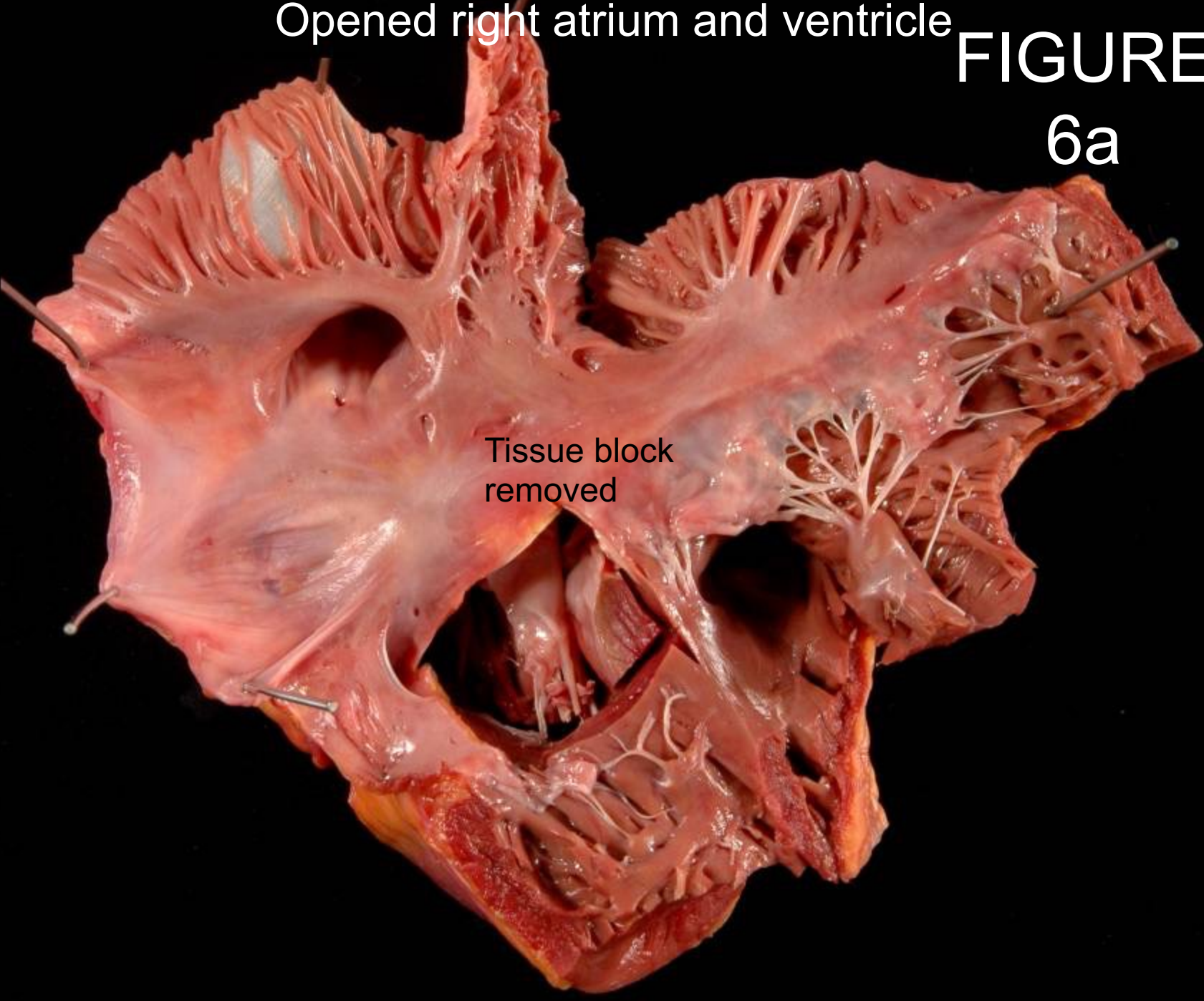
"Koch's triangle"



Opened right atrium and ventricle

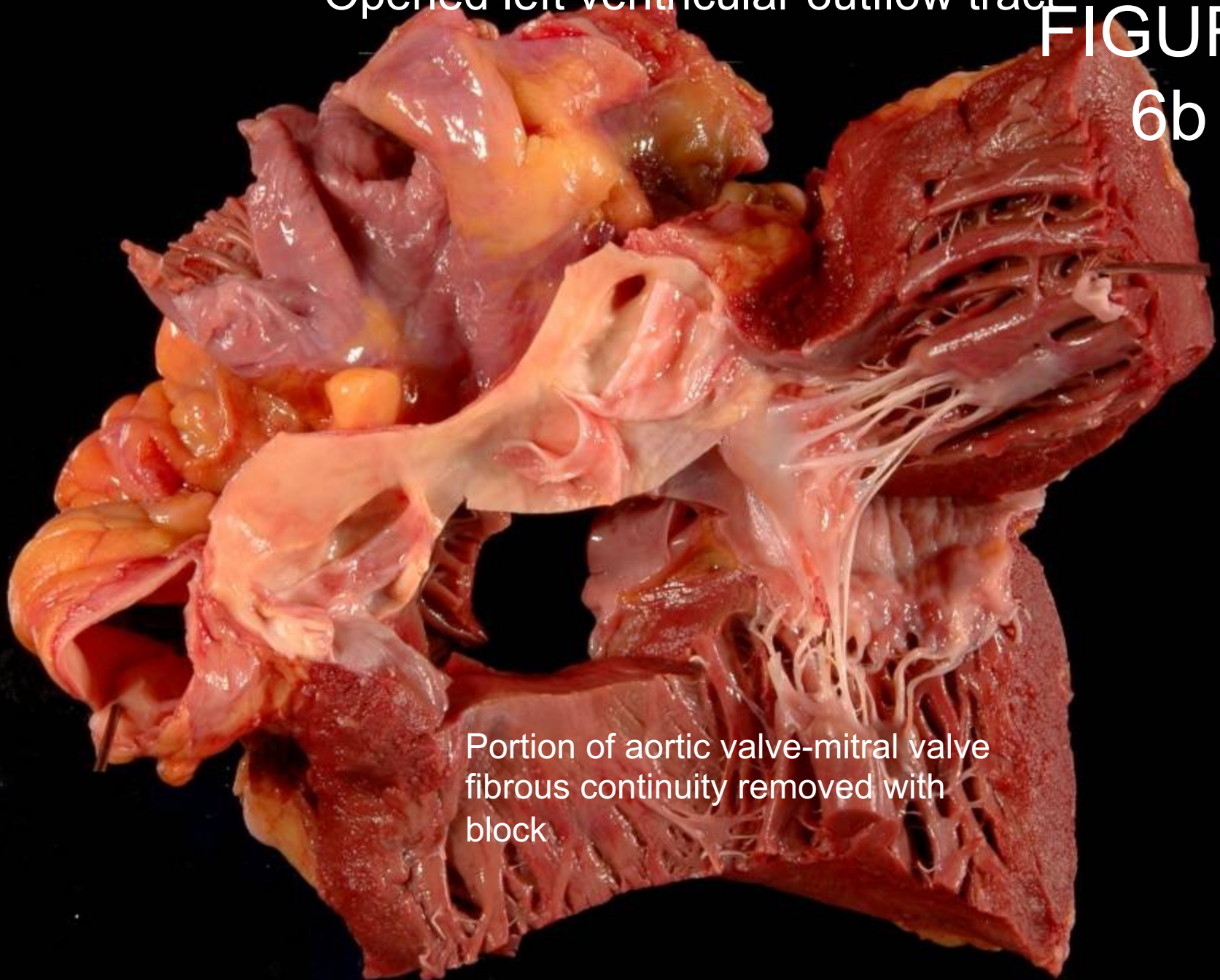
FIGURE
6a

Tissue block
removed

An anatomical specimen of a heart, specifically the right atrium and ventricle, is shown in a dissected state. The heart is pinned open with several metal pins. The interior of the right ventricle is visible, showing the trabeculated structure of the myocardium. A large, irregularly shaped area of the heart wall has been removed, leaving a deep, dark cavity. This area is labeled "Tissue block removed". The surrounding tissue is a reddish-pink color, and the overall structure is complex and detailed.

Opened left ventricular outflow tract

FIGURE
6b

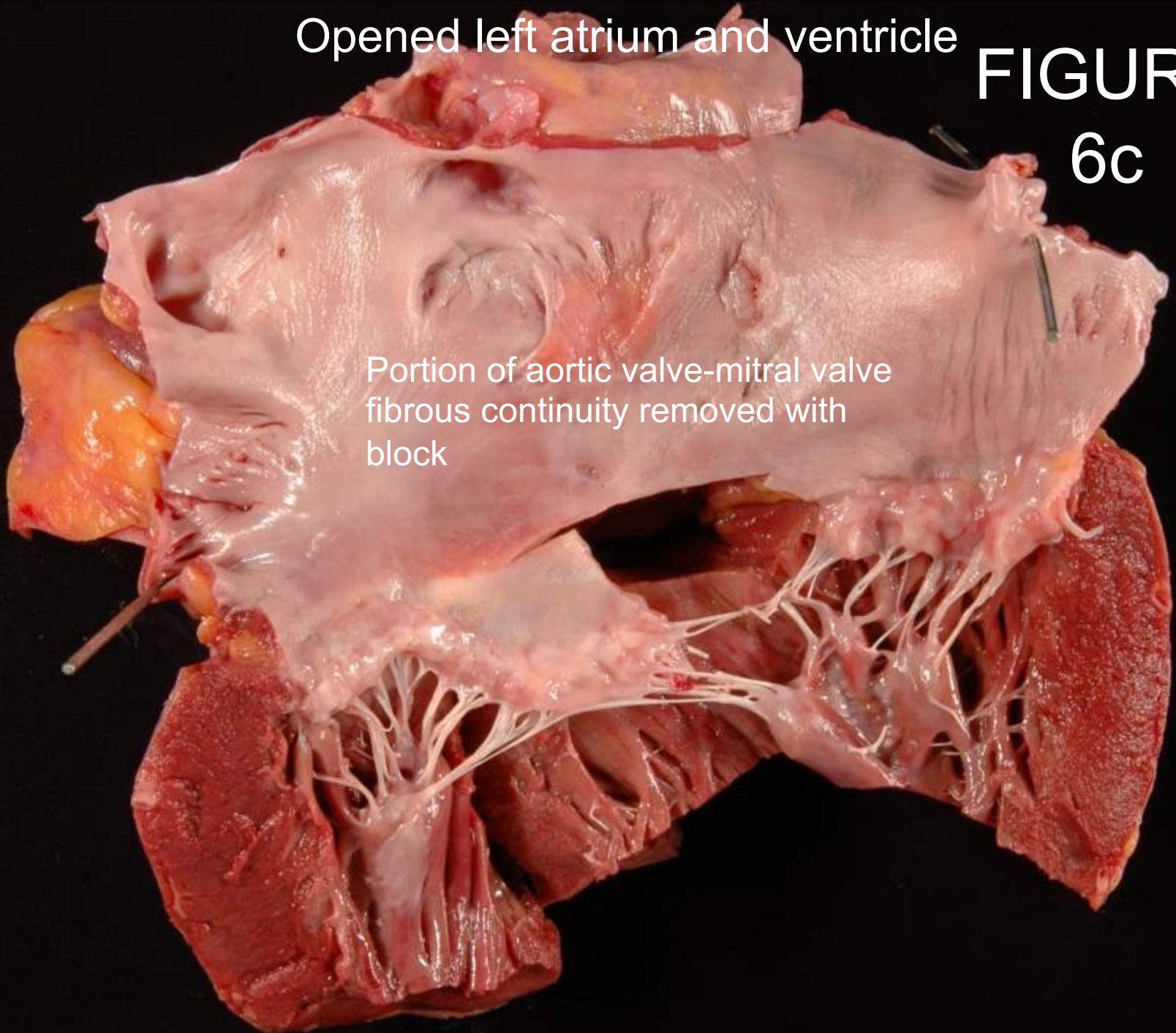


Portion of aortic valve-mitral valve
fibrous continuity removed with
block

Opened left atrium and ventricle

FIGURE
6c

Portion of aortic valve-mitral valve
fibrous continuity removed with
block

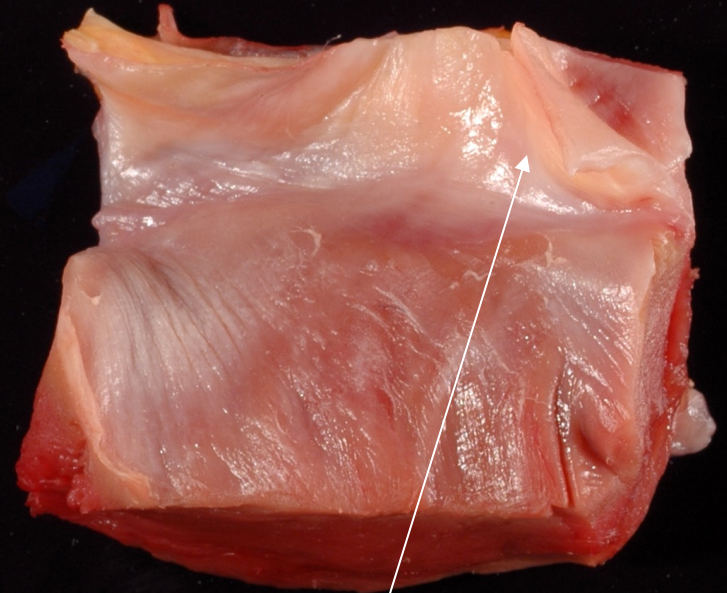


Right Atrial Aspect of Block



Tricuspid
valve

Left Ventricular Outflow Tract
Aspect of Block



Aortic-mitral fibrous
continuity

FIGURE
7a

FIGURE
7b

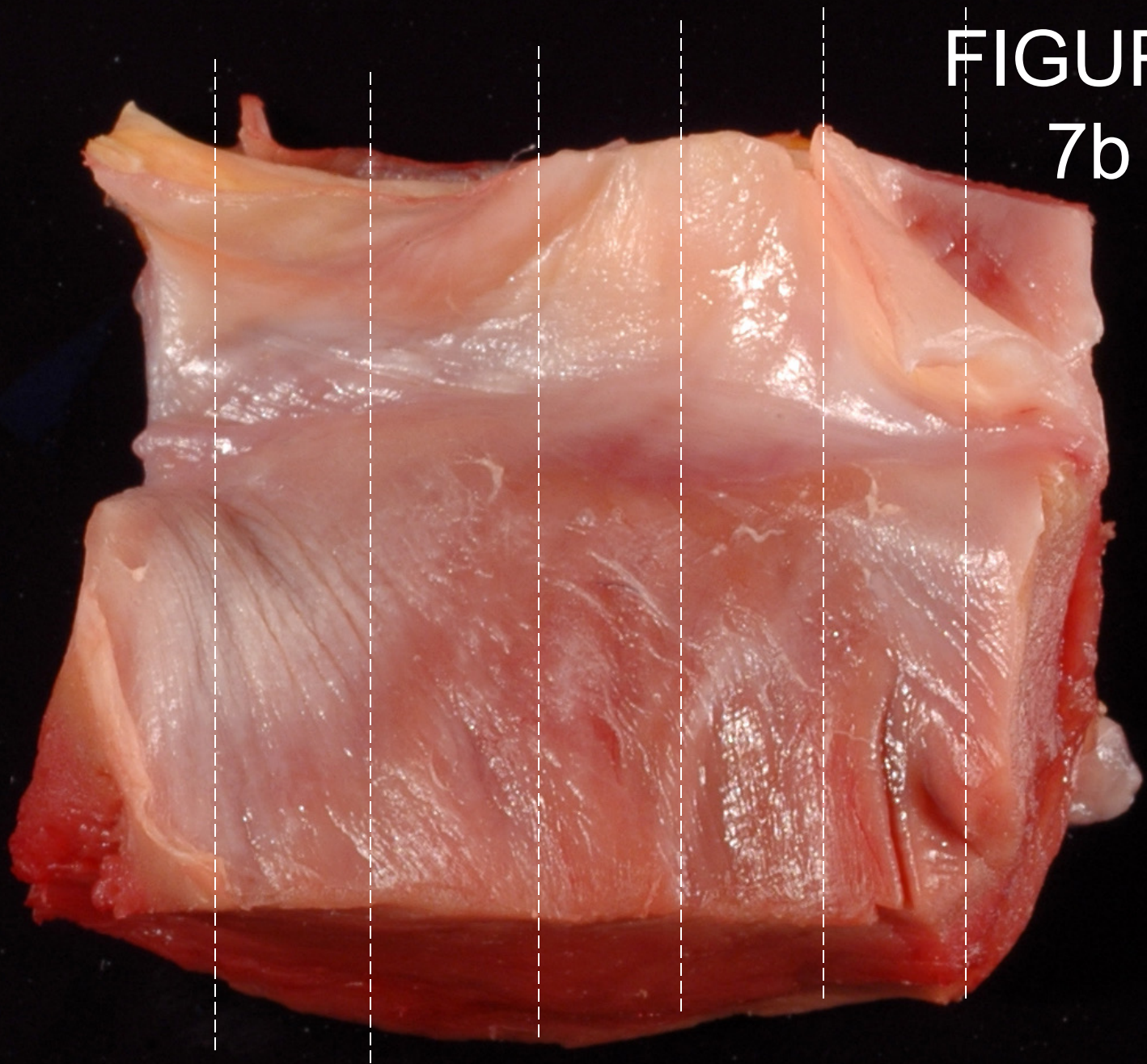
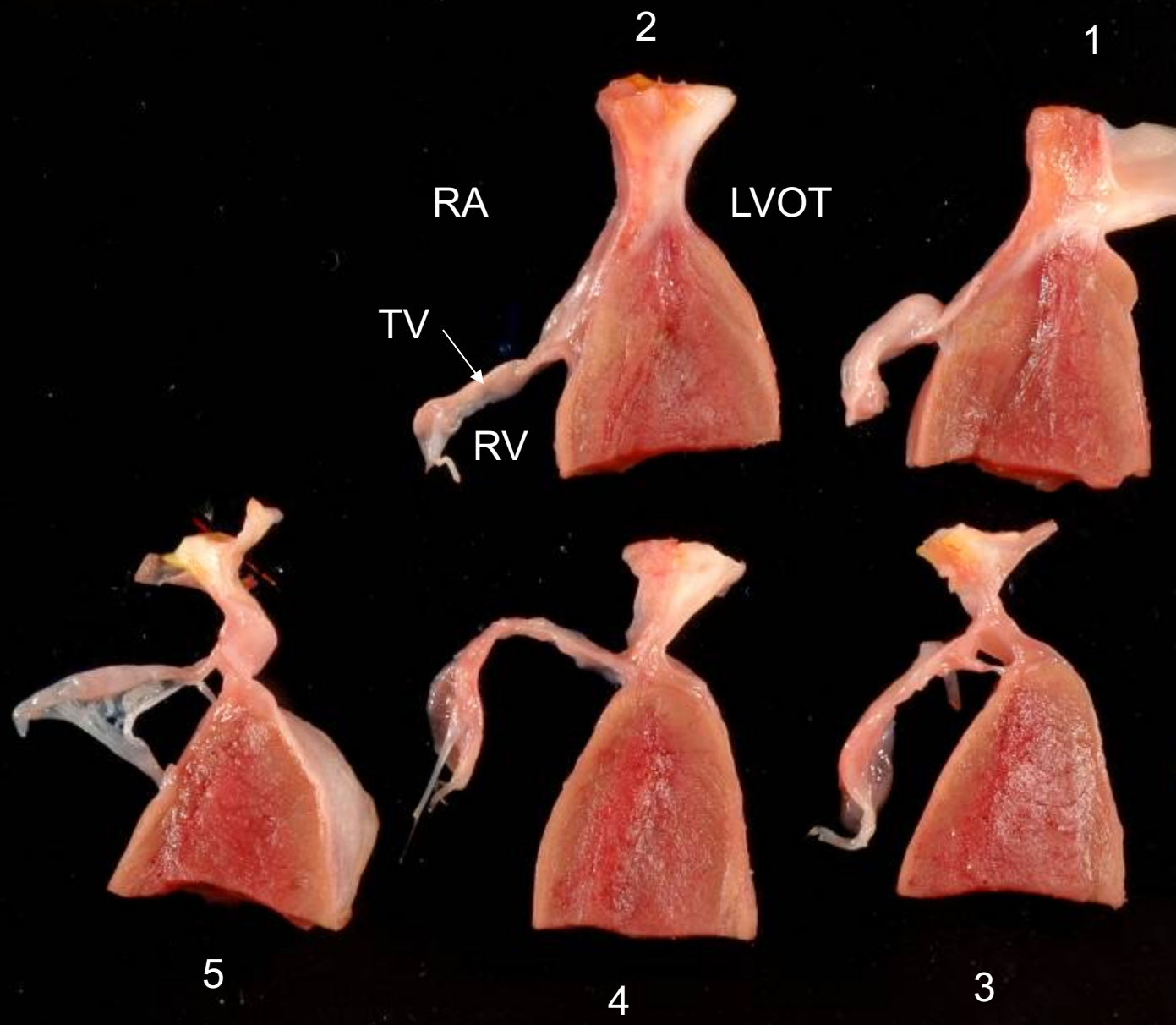


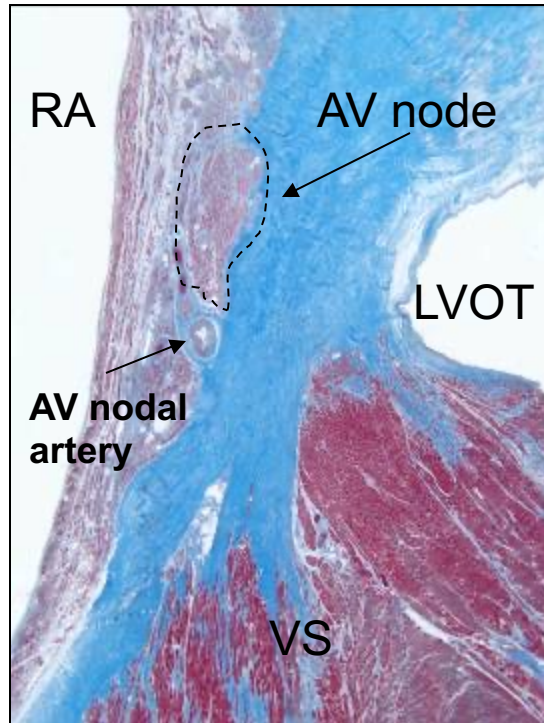
FIGURE
7c



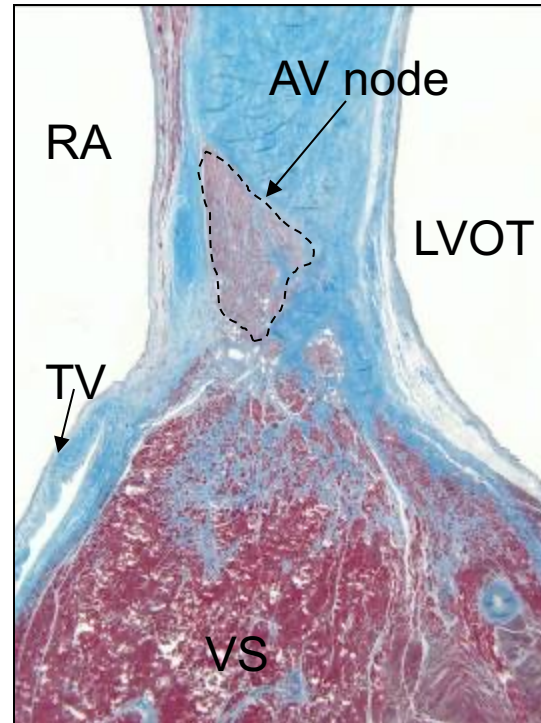
FIGURE

8a

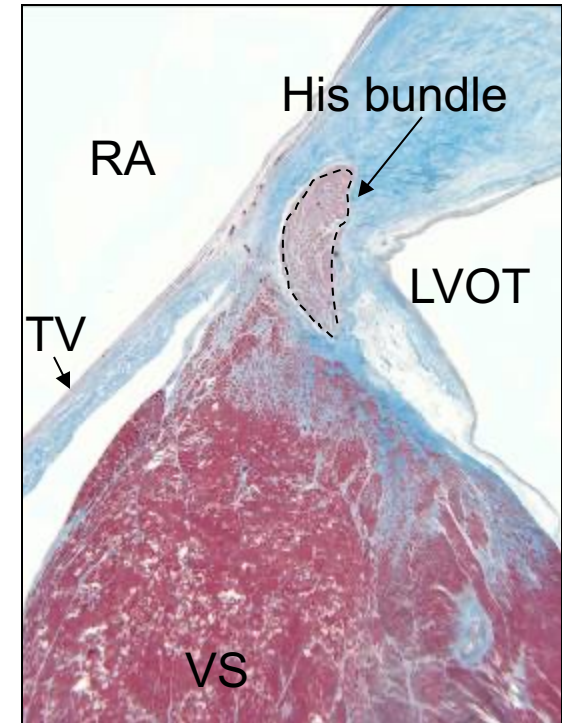
1



2

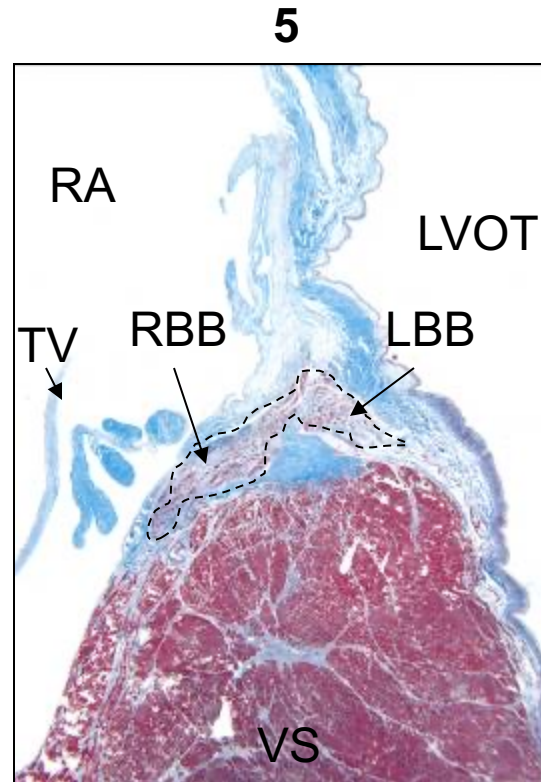
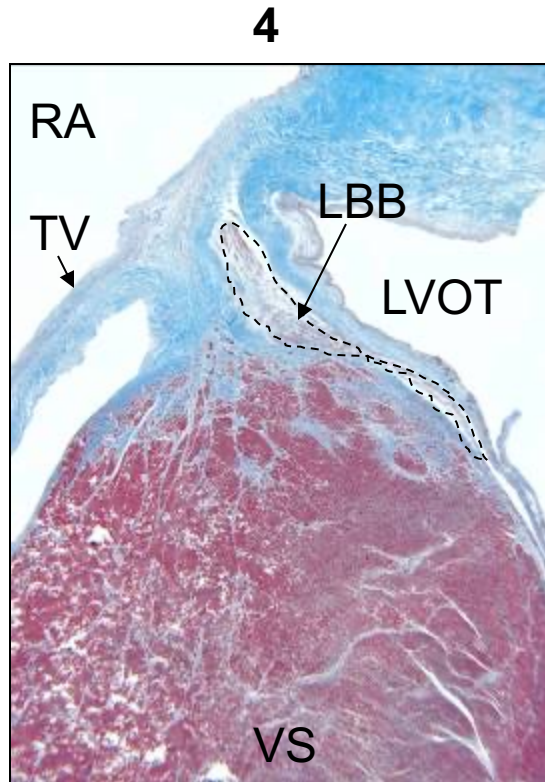


3



FIGURE

8b



RA: right atrium

TV: tricuspid valve

**VS: ventricular
septum**

**LVOT: left ventricular
outflow tract**

AV: atrioventricular

**RBB: right bundle
branch**

**LBB: left bundle
branch**